

A conceptual illustration on a dark blue background. Two human silhouettes are shown from the chest up. Instead of heads, there are two small, dark, island-like structures with some greenery and a small building, floating above the necks. Concentric white circles around each 'island' suggest ripples in water, reinforcing the 'digital islands' metaphor.

針對「孤島化」的數碼科技

勞敏琪
大銀項目總監

大銀
BIG SILVER



“



孤獨死的重點不是「死」，
而是孤獨。

— 曾為上萬孤獨死人士清理房間的
80後特殊現場整理師



【移民遺孤】子女移民遺年紀老邁父母在港 7成獨居長者陷社交孤立及抑鬱

育兒經 16:08 2023/04/13





社區 / 社區專題

【不再自殺】孤獨男生首嘗與母共住 合力修補破枕頭

以前的事過去了，
追究誰都太遲。

以前好想有家人，
等到家人回來了，

我已經習慣一個人解決所有問題。

18歲少年





● 科技娛樂 科技趣聞

高盛：AI 將導致 3 億人失業 香港將成為全球最受影響地區







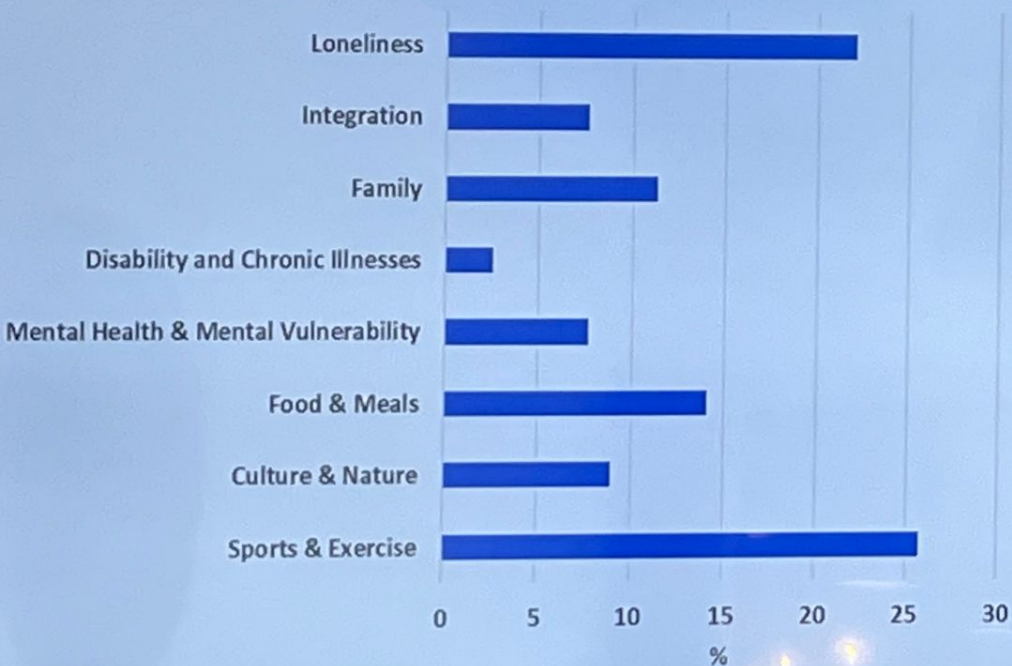


Find new communities, friendships and interests with **564,540** others

The social network for your
neighbourhood.
Used by more than
800,000 households.



Themes



Age Groups 15-96



iOS
Android
iPad
Web

See posts
from other users



Contact others
via their posts



Write together & agree
on how to meet



See unions in
your local area



EXAMPLES

Relatives Groups

- Nursing Homes
- People with brain injuries
- People with dementia
- Cancer patients

Group Programs

- Smoking cessation
- Diabetes group
- Rehabilitation
- Weight loss

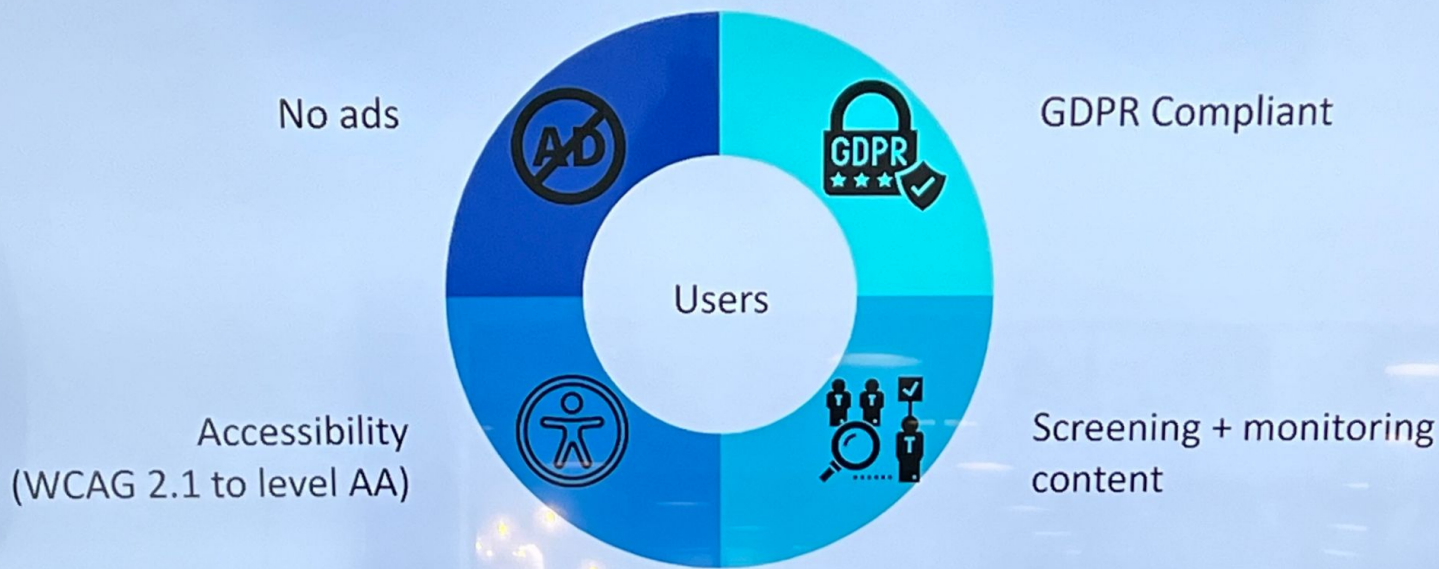
Mental Vulnerable

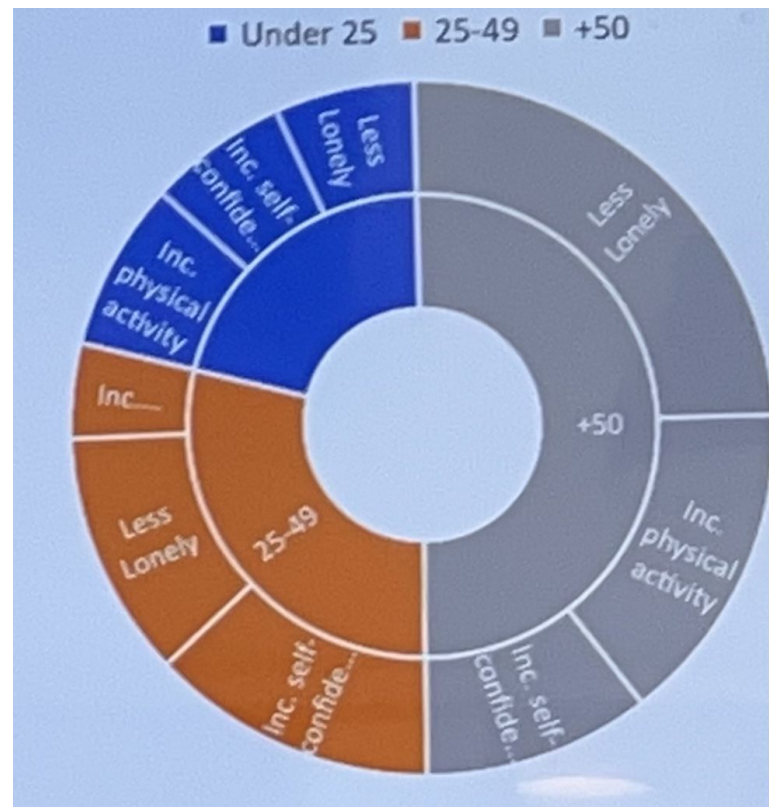
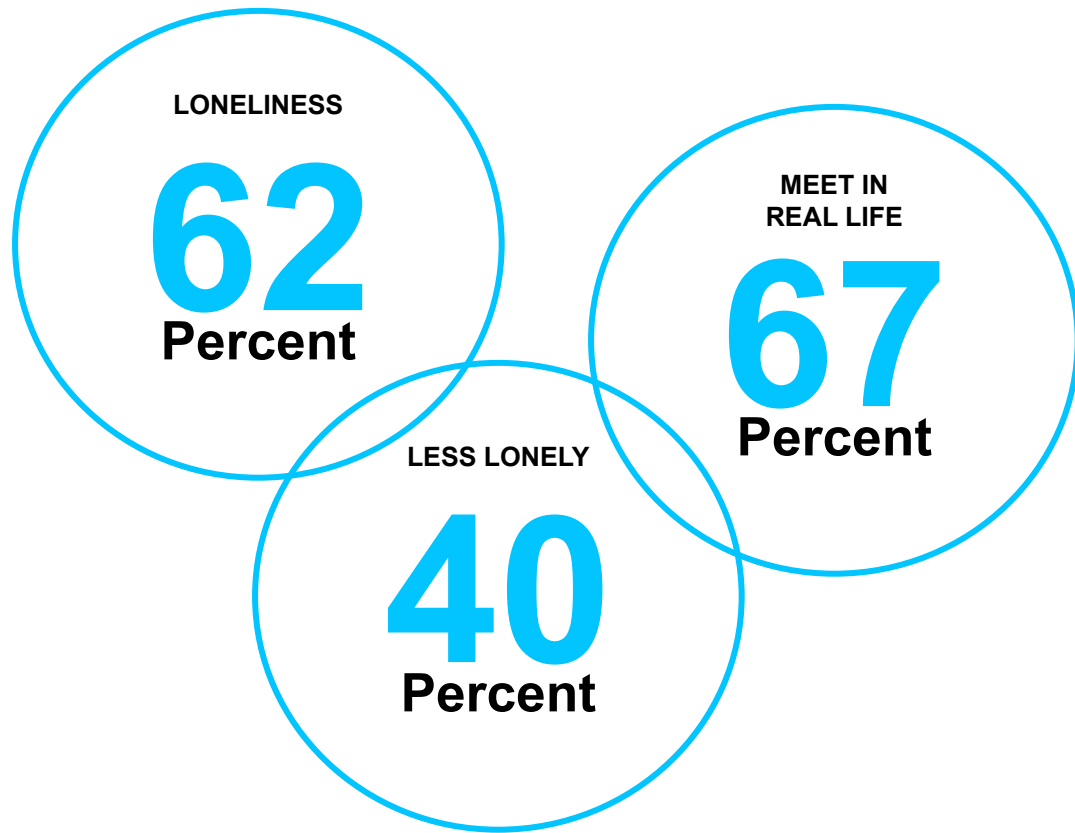
- Anxiety
- Depression
- Stress Management
- Residential facilities

Other Communities

- Walking groups
- Reading groups
- Culture groups
- Exercise groups

Ethics and data security





Solutions for Community Engagement

Neighbourhood App

- Peer-to-peer network
- Connect online, meet offline
- Social activities
- Circular economy
- Exchange ideas, goods and services

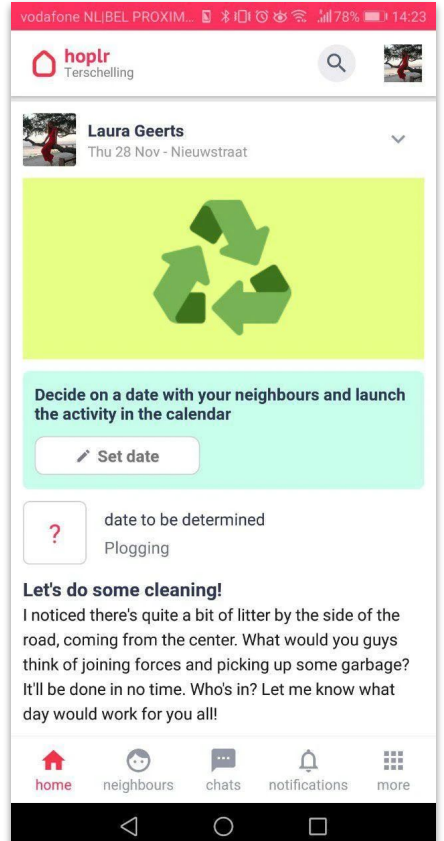
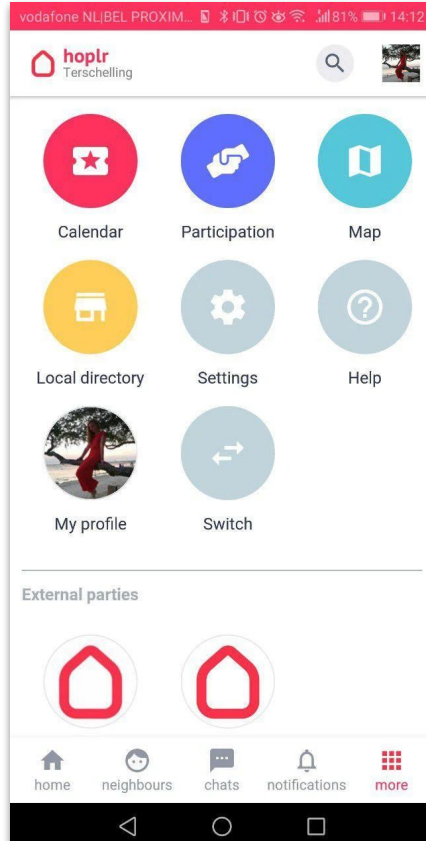
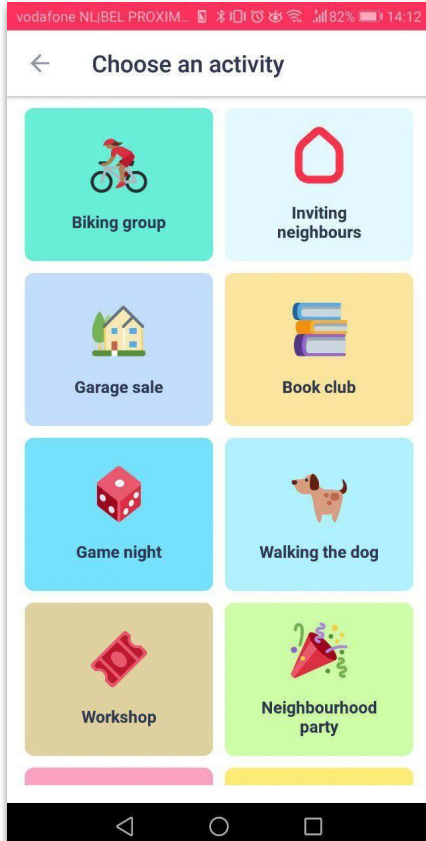
Public Participation

Involve the silent majority

- Verified surveys
- Participatory budgeting
- Interactive maps
- Community insights for making data-driven decisions

Neighbourhood Concierge

- Ageing in place
- Workflow for help requests
- Build social support network
- Informal community care



How can neighbours help?



Companionship

- Conversations
- Play board games
- Going for a coffee



Run errands

- Purchases
- Picking up medications



Health & Care

- Schedule appointments
- Doctor visit
- Pedicure
- Haircut



Tech & Admin

- Using digital devices
- Online banking
- Social media
- Configure TV
- Connect wifi



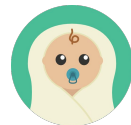
Sports & Exercise

- Going for a walk
- Yoga & meditations
- Physical coach



Cook

- Meal preparation
- Teach recipes
- Assist in cooking



Child Care

- Babysitting
- Homework
- Entertainment



Pet Help

- Pet sitting
- Walk pet
- Visit vet



Learning

- Practice language
- Home tutoring

A Digital network is not accessible to everyone

E.g. elderly, digitally illiterate, vulnerable groups



1. Lowering the threshold to ask for help

Through a local person of trust



2. Matching people within the community

Activate the social capital & build a social support network



3. Centralizing all help requests

Have a clear overview on outstanding tasks



Neighbourhood Concierge

Local person of trust

Vulnerable
citizens



Help request

Digital, phone or
offline

Neighbourhood
Concierge



Workflow

Central
registration
dashboard



**Informal
Community Care**

> 90%

**Formal
Organizations**

< 10%



Thank You!